

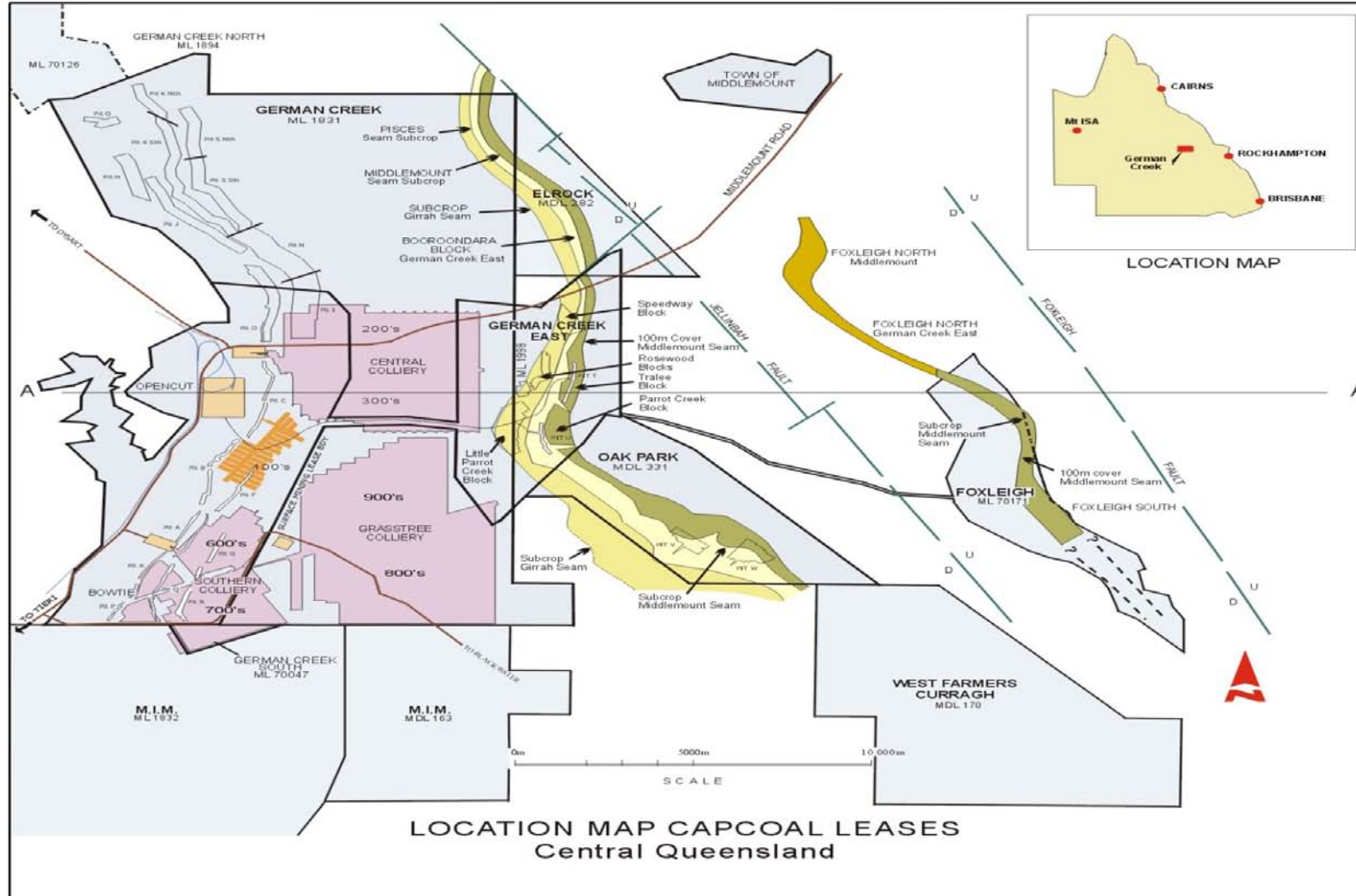


Whats happening at CENTRAL?

Ron Cassidy – Gas Drainage Engineer



LOCATION – CENTRAL COLLIERY





CENTRAL



- **DEVELOPMENT CEASES JANUARY 2005 (Completion of 209)**
- **LONGWALL CEASES NOVEMBER 2005 (Completion of 209 longwall)**
- **APPROXIMATELY 3 MONTHS SALVAGE.**



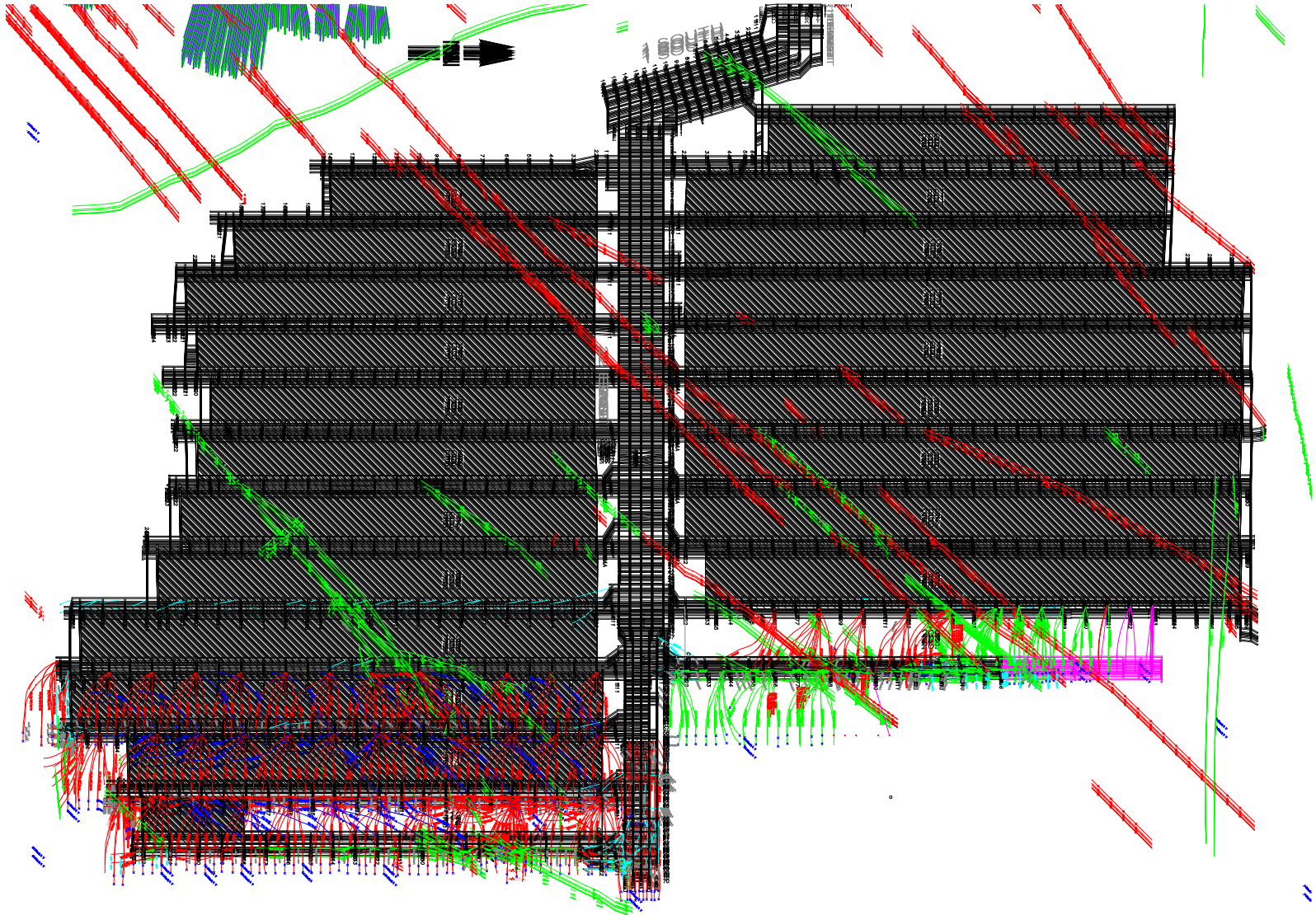
Outburst Management Plan Overview.

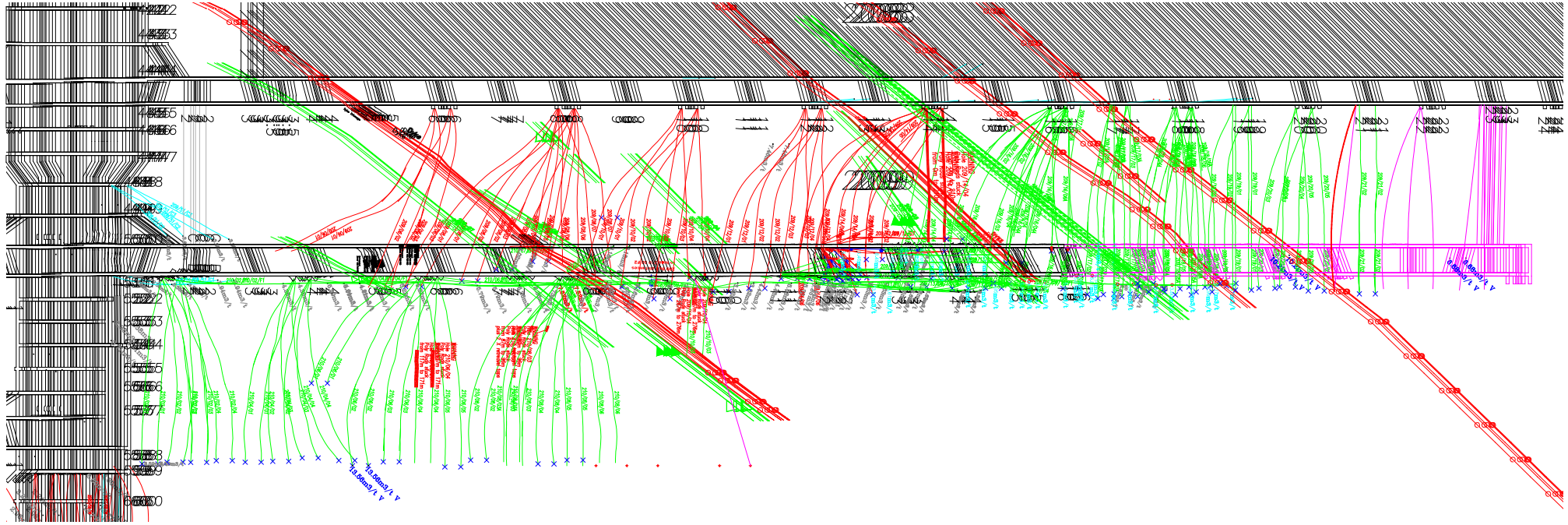


- **Threshold Value = 7.5m³/t**
- **Prove drained envelope of 10m in unstructured area.**
- **Prove drained envelope of 15m in structured area.**
- **Can only drive to within 15m of last complying core sample.**
- **Core locations determined by committee.**



CENTRAL MINE PLAN







DRILLING AT CENTRAL



- **DIRECTIONAL CROSS BLOCK**
- **DIRECTIONAL FLOOR HOLES IN INTERBURDEN**
- **SURFACE TO SEAM (compliance)**
- **SURFACE GOAF**



208 RE-ENTRY



- **PANEL FINISHED PRODUCTION IN OCTOBER 1999**
- **208 TAIL GATE SEALED JUNE 2001 DUE TO FALL AT 23 C/T**
- **REQUIRED ACCESS MAY 2001 FOR DRILLING/DRAINAGE TO FIT MINE SCHEDULE**
- **GAINED ACCESS AUGUST 2004.**

PROBLEMS

- **VENTILATION (SURFACE BOREHOLE WITH BLOWER FAN)**
- **HEAT**
- **WATER**
- **SEVICES AVAILIBILITY**
- **ROOF & RIB STABILITY**
- **DENIED ACCESS OCTOBER 2004 TO ALLOW DYKE PREMINING TO COMMENCE.**
- **STARTED DRILLING LATE DECEMBER 2004.**



DRILLING



LOGISTICS –

- ROADS AND WATER
- NO C/T'S
- COMMUNICATIONS

CONDITIONS

- HORIZONTAL SHEAR ZONE
- VERTICAL SHEAR ZONE
- COAL INSTABILITY



MORE DRILING PROBLEMS



- **HOLES TO BE LINED WITH 50mm POLY FOR EFFECTIVE DRAINAGE**
- **ONCE HORIZONTAL SHEAR ZONE BREACHED POLY UNABLE TO BE INSTALLED**
- **UNABLE TO DRILL THROUGH VERTICAL SHEAR ZONE**
- **TRIED GOING OVER OR UNDER**
- **LOST HOLE CONTROL ON RE-ENTRY TO SEAM**



DRILLING SOLUTIONS



- **GREATER ATTENTION TO STANDPIPE INSTALLATION**
- **TRIED TO STAY ABOVE OR BELOW HORIZONTAL SHEAR ZONE**
- **TOOL FACE PERFORMANCE REITERATED TO DRILLERS**
- **SURVEY INTERVALS REDUCED TO 3M TO MAINTAIN HORIZON CONTROL**
- **CHECK SHOTS TO ENSURE TOOL FACE IN DESIRED POSITION**
- **EXPERIMENTED WITH DIFERRENT BENDS AND BIT SIZE**
- **CHANGED DRILLERS**
- **REDUCED OPERATIONS TO SINGLE SHIFT**



DRILLING SOLUTIONS



- **RESISTED USING DRILLING MUDS AS EFFECT ON DRAINAGE WAS NOT CLEAR**
- **EVENTUALLY USED DRILLING MUDS WITH CHLORINE TO DILUTE ON COMPLETION**



OPERATIONAL SOLUTIONS



- **DRILL/DRAINED FROM 11C/T TO 14 C/T209**
- **ADDITIONAL CROSS BLOCK HOLES DRILLED**



FLOOR HOLES



- DRILLED IN INTERBURDEN TO ALLOW CONDUIT FOR GAS
- COMMERCIAL ISSUES FROM DRILLING CONTRACTOR
- DRILLED SHORTER HOLES FROM TAILGATE
- ABUTMENT PRESSURE FROM ADJACENT GOAF DEMOLISHED STANDPIPES
- DRILLED FROM MAINGATE.



DEMOLISHED STANDPIPE





GOAF DRAINAGE LAYOUT

